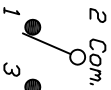
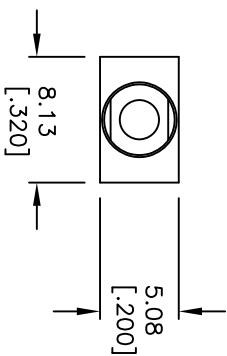


RECOMMENDED PCB LAYOUT



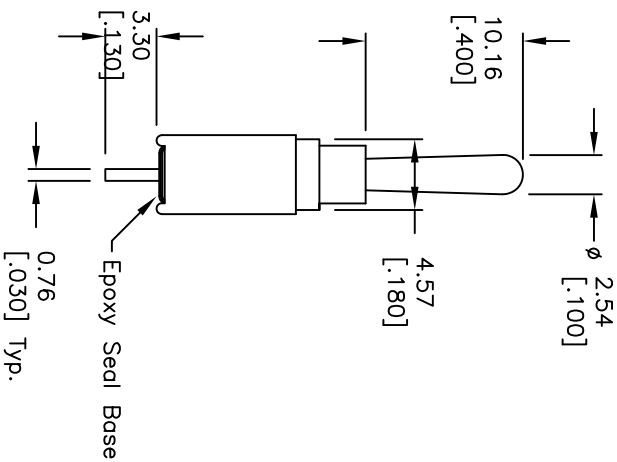
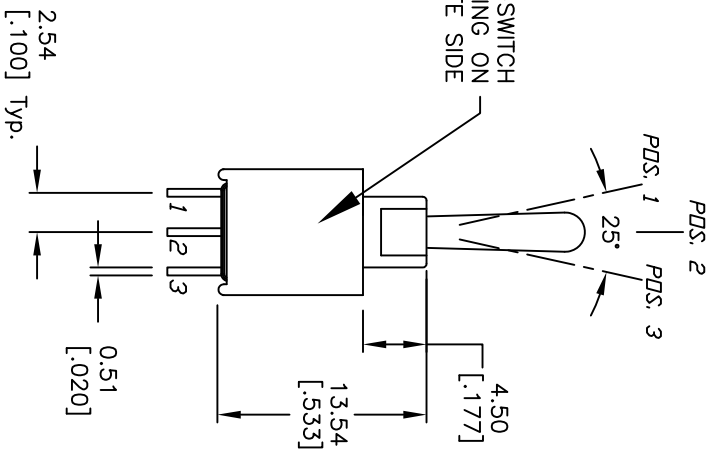
CIRCUIT: SPDT
CONTACT CONFIGURATION

SWITCH FUNCTION		
PDS. 1	PDS. 2	PDS. 3
DN	OFF	DN
2-3	OPEN	2-1

NOTES:

1. ALL DIMENSIONS IN MM [INCH]
2. GENERAL TOLERANCE: X.X=±0.4
X.XX=±0.25
3. TERMINAL NUMBERS FOR REF ONLY
4. RATING: 0.4VA @ 20V AC or DC max.
5. FIXED TERM. & MOVING CONTACT:
Copper ALLOY W/GOLD plate over
Nickel plate.
6. ELECTRIC LIFE: 50,000 make-and-break cycles
at full load.
7. INSULATION RESISTANCE: 1,000 Mega-ohm min.
8. DIELECTRIC STRENGTH: 1,000 V RMS @sea level.
9. OPERATING TEMP.: -30C to +85C

E-SWITCH
MARKING ON
OPPOSITE SIDE



E-SWITCH

200AWMSP3T1A1M2RE

TITLE

SCALE

2:1

DATE

5/31/02

DR

CB

DWG

T201202

REV

C

REV.	ECN No.	DESCRIPTION	DATE	CHKD
C	21002	13.54 WAS 13.39	2/4/13	EBP
B	12200	REVISED AND REDRAWN	5/31/02	CB

THE INFORMATION CONTAINED IN THIS DOCUMENT
IS PROPRIETARY TO E-SWITCH AND IS
NOT TO BE COPIED OR TRANSFERRED